

# PAST PERFORMANCE

(as of 31/12/2022)



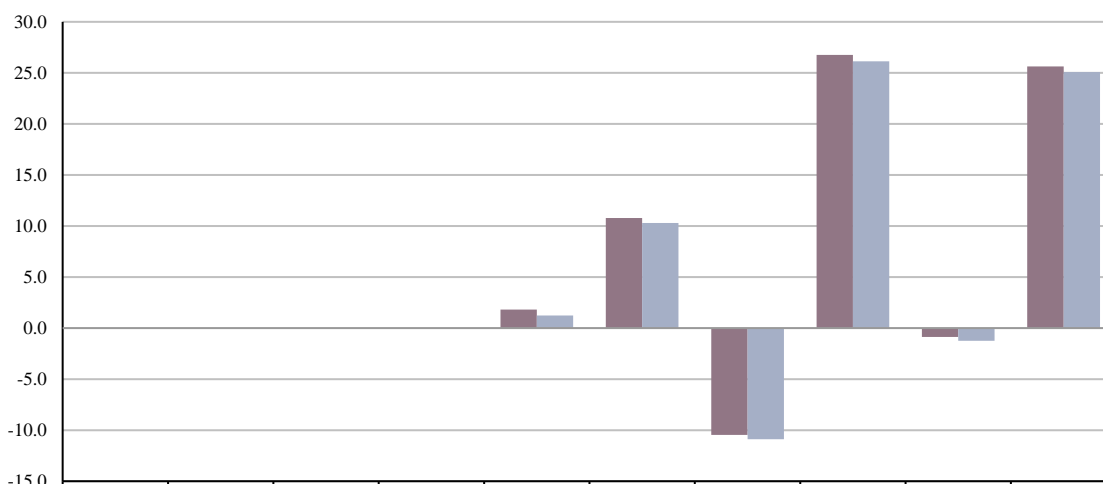
Past performance is not a reliable indicator of future performance. Markets could develop very differently in the future. It can help you to assess how the fund has been managed in the past.

## Northern Trust UCITS FGR Fund - Northern Trust Europe Custom ESG Equity Index UCITS FGR Feeder Fund (the "Fund") - Unit Class A EUR Distributing ("Unit Class")

### PRODUCT

**Product:** Northern Trust UCITS FGR Fund - Northern Trust Europe Custom ESG Equity Index UCITS FGR Feeder Fund (the "Fund") - Unit Class A EUR Distributing ("Unit Class")  
**Manufacturer name:** Northern Trust Fund Managers (Ireland) Limited  
**ISIN:** NL0011400346  
**Unit Class Launch Date:** 08/10/2015  
**Unit Class Currency:** EUR

This chart shows the fund's performance as the percentage loss or gain per year over the last 6 years against its benchmark. It can help you to assess how the fund has been managed in the past and compare it to its benchmark.



	2012	2013	2014	2015	2016	2017	2018	2019	2020	2021
NL0011400346					1.81	10.79	-10.47	26.76	-0.87	25.63
MSCI Europe Custom ESG Index					1.24	10.30	-10.89	26.14	-1.25	25.08

Performance is shown after deduction of ongoing charges. Any entry and exit charges are excluded from the calculation.